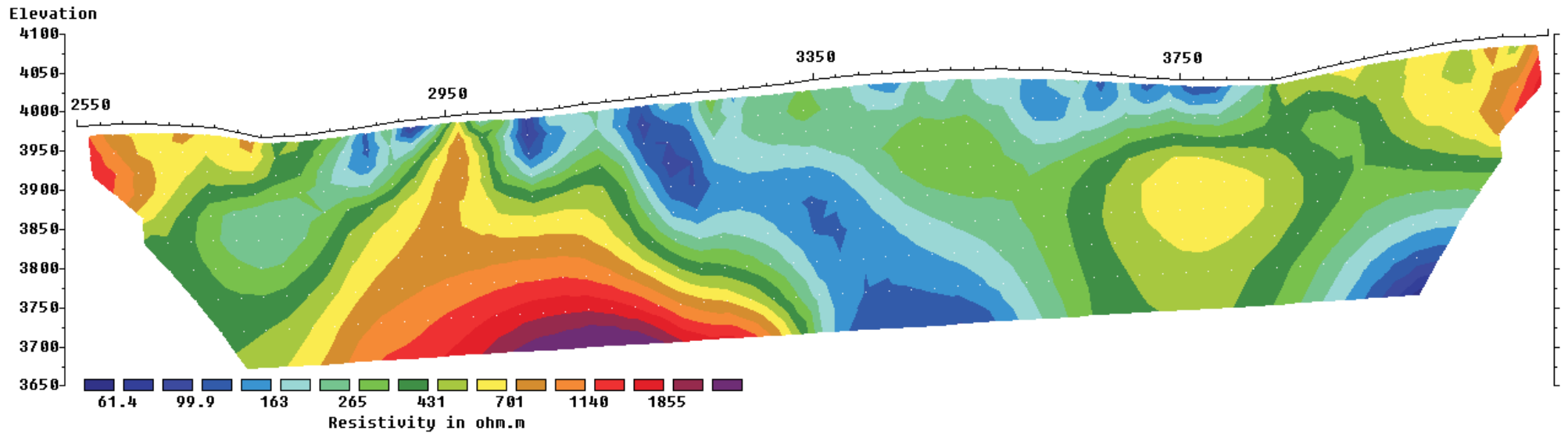


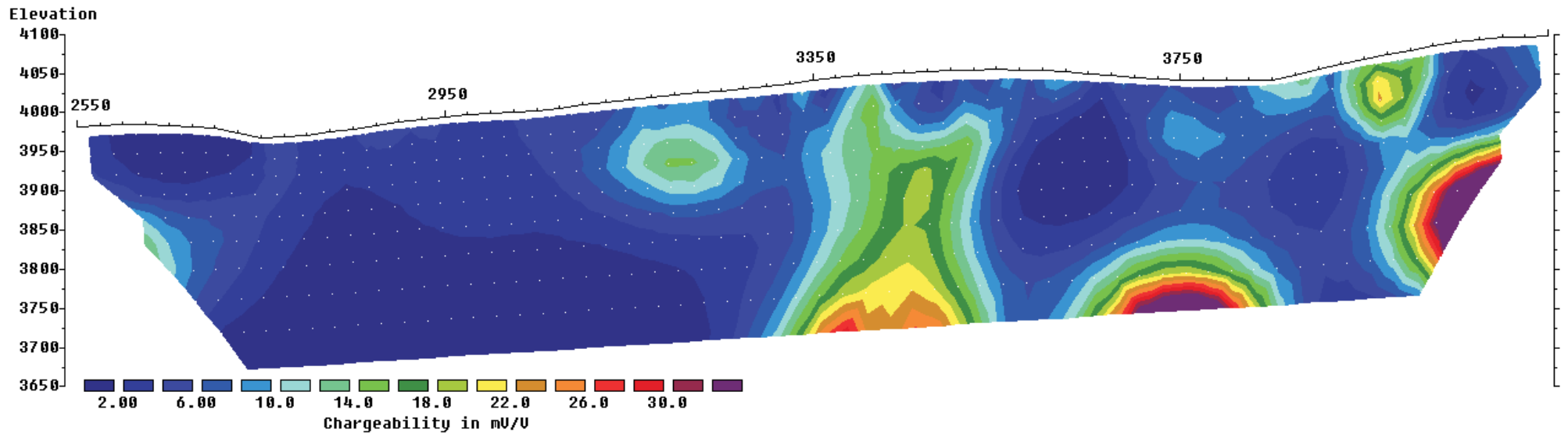
La Constancia L12

Model resistivity with topography



Unit Electrode Spacing = 25.0 m.

Model IP with topography



Unit Electrode Spacing = 25.0 m.

Horizontal scale is 18.73 pixels per unit spacing
Vertical exaggeration in model section display = 0.85
First electrode is located at 2550.0 m.
Last electrode is located at 4150.0 m.